



Size: H 23cm x W 43cm x D 35cm
Weight: 21Kg

AS-ES-23

Get FUN in Home Security

My Safe
My Personality



JAKARTA

Jl. Pintu Besar Selatan No.93
Jakarta Barat
T : (021) 690 9893/ 690 6788
E : biru_int@biruindonesia.com

SURABAYA

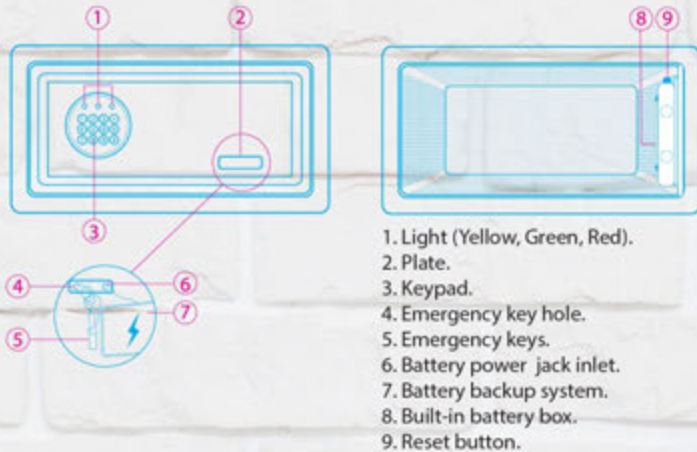
Jl. Raya Simojawar No. 35E
T : (031) 9914 2878/ 9914 7698
E : sby@biruindonesia.com

MEDAN

Jl. Asia No. 97
T : (061) 736 5785/ 736 5786
E : mdn@biruindonesia.com

BRS Electronic Home Safe is crafted from high-grade steel with a dual lock system and battery backup. The minimalist design is discreet and effective - a compact security system to protect your cash and valuable personal items against thieves and intruders.

PARTS



1. Light (Yellow, Green, Red).
2. Plate.
3. Keypad.
4. Emergency key hole.
5. Emergency keys.
6. Battery power jack inlet.
7. Battery backup system.
8. Built-in battery box.
9. Reset button.

TO CHANGE THE PASSCODE

1. Change the original passcode of "12345678" to ensure safety.
2. Press the green reset button on the back of the door inside the safe. You will hear two short "clicks" and the yellow light will turn on.
3. Enter a new passcode from 1 to 8 digits in length. You will hear two short "clicks" and the yellow light will turn off.
4. Press the "#" button to confirm.

OPENING & CLOSING THE SAFE

Opening the safe

1. Enter your passcode. You will hear 2 short "clicks" and the green light will turn on.
2. Press the "#" button to confirm.
3. Turn the handle clockwise within six seconds to open the safe.

Closing the safe

- Close the door and turn the handle counterclockwise to close.

FIRST TIME OPERATION

The safe can be operated via a key or passcode :

To open the safe with the emergency key

1. Uncover the plate at the bottom of the safe to reveal the emergency keyhole and battery power jack inlet.
2. Insert the emergency key into the keyhole, and turn the key counterclockwise. Do not release the key; otherwise, the key will return to its original position.
3. Turn the handle clockwise to open the door.
4. Open the battery box cover on the back of the door.
5. Mount four AA batteries in the battery box.

To open the safe with the passcode

1. Uncover the plate at the bottom of the safe to reveal the emergency keyhole and battery power jack inlet. Insert the battery backup system into the power jack inlet.
2. The safe comes with the factory-set passcode "12345678".
3. Enter this passcode and press the "#" button to confirm.
4. The green light will turn on.
5. Turn the handle clockwise within six seconds to unlock the safe.
6. Open the battery box cover on the back of the door.
7. Mount four AA batteries in the battery box.

ALARM FUNCTION

1. When the wrong passcode is entered, the yellow light flashes six times.
2. If you enter the wrong passcode three times in a row, the safe will sound the alarm for 40 seconds.
3. During the alarm, enter the correct passcode to cancel the alarm.

VIBRATION ALARM MODE

1. Press the "#" button.
2. You will hear two short "click" and the yellow light flashes six times to activate the alarm mode.
3. Once activated, the alarm will sound 40 seconds if the safe is shaken or moved.
4. To cancel the alarm, enter the correct passcode.
5. Note : The vibration alarm mode can be activated while the safe door is both locked and unlocked.

LOW BATTERY & BATTERY REPLACEMENT

Low battery

On entering the passcode, if the green and red light switch on at the same time, it indicates that batteries are low. Replace the batteries.

Battery replacement

If the batteries are dead, open the safe with the battery backup system. Replace the batteries.

FORGOTTEN PASSCODE & EMERGENCIES

In case you forget your passcode or the electronic system breaks down

1. Insert the emergency key into emergency keyhole.
2. Turn the emergency key counter-clockwise and do not release the key; otherwise, the key will return to its original position.
3. Turn the handle clockwise to open the door.
4. Note : In case of forgotten passcode, open the safe as instructed above and reset the passcode for future use.

TIPS & WARNINGS

1. Do not store the user manual, emergency key and the external power supply box in the safe.
2. If the safe is not in use for extended periods of time, remove the batteries to prevent damage to the safe's electronic liquid system.
3. If mounting the safe onto a wall, ensure that the wall is structurally secure.